

Community Perceptions

A majority of Lakewood residents like their military neighbors

87% "Very" or "Generally" Supportive of Service Members



★ Compare to Active Duty Perceptions: Two years ago, we asked JBLM service members to rate the supportiveness of their community for JBLM and the military.

71% of Responses were positive:

37% "Very Good"

34% "Good"

Top Reasons Lakewood Residents Said they Value JBLM

1. JBLM's effect on **ECONOMY:** 49%
2. Increased **SECURITY:** 17%
3. Use of Base **FACILITIES:** 11%
4. Because they are **GOOD NEIGHBORS:** 11%



Perceived Negatives of JBLM

1. Effect on **TRAFFIC CONGESTION** 53%:
"Significant Issue"
2. Noise from **MILITARY AIRCRAFT** 10%:
"Significant Issue"
3. Noise from **FIRING RANGES:** 10%:
"Significant Issue"



The "JBLM Traffic" Myth



This survey highlighted an ongoing citizen belief that JBLM is the primary cause of the traffic congestion on I-5 in Pierce and Thurston Counties.

The Facts: I-5 has not been widened through JBLM since 1975, and is inadequate to meet today's demand. Between 1970 and 2010, the population of Washington State increased 97 percent, Pierce County grew by 95 percent, and Thurston County grew by 228 percent.

Population Growth 2000-2010:

- Military on-base population increase: **4,611**
- Military off-base pop. increase estimate: **10,759**
- Civilian Pierce and Thurston pop. increase: **128,577**

Population growth in Pierce and Thurston counties is projected to continue at a similar pace through 2040. SSMCP, along with regional partners, is working to improve Transportation in the region.

Over \$500 million in I-5 improvements are currently underway

For Updates:

www.wsdot.wa.gov/Projects/I5/default.htm



MISSION

To foster effective communication, understanding, and mutual benefit by serving as the most effective point of coordination for resolution of those issues which transcend the specific interests of the military and civilian communities of the South Sound region.

6000 Main Street SW
Lakewood, WA 98499
Phone: 253-983-7772
E-mail: tspeir@cityoflakewood.us
ssmcp.org



SOUTH SOUND MILITARY & COMMUNITIES PARTNERSHIP

2015 Community & Business Survey Results

Lakewood

SSMCP 2015 Community Survey



Joint Base Lewis McChord & the South Sound:

Joint Base Lewis McChord (JBLM) is an over 86,000 acre military installation in the South Puget Sound, nestled among two counties and 17 cities and towns, and bisected by Interstate 5. JBLM is the 3rd largest employer in the state of Washington, and an economic driver for the state.

SSMCP: The South Sound Military & Communities Partnership, a regional partnership of governments and organizations in Pierce and Thurston Counties, works to improve outside knowledge of the military's direct and indirect impact on the region and the State, as well as increase coordination between military and civilian counterparts.

2015 Community and Business Survey:

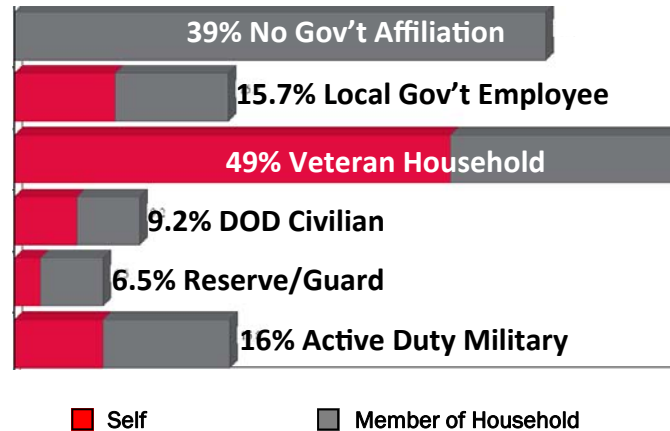
In previous years, SSMCP conducted Needs & Preferences surveys of active duty service members on JBLM-over 70% of whom live off-base in local communities. In 2015, SSMCP looked outside the base and asked community members and businesses about their perceptions, knowledge, and interaction with the military presence in the South Sound. The survey was conducted by Elway Research, Inc.

Lakewood, Washington: Of the respondents to SSMCP's 2015 survey covering Pierce and Thurston Counties, 7% identified as Lakewood residents. This subset of the data is not statistically valid. Percentages may be rounded. For full survey, please visit ssmcp.org

This information provides a snap-shot of community relationships with JBLM.

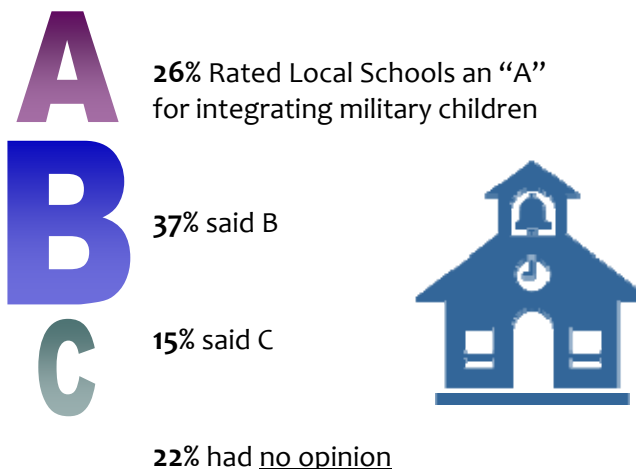
Military-Connected Respondents in Lakewood

Half of Lakewood Households surveyed were Veteran-connected, and **1 in 6** had some government affiliation.



The percentages in this graph total more than 100% due to overlap in households.

Of Lakewood Participants with Children:



Lakewood Citizens Interact with JBLM

28% of Lakewood Participants have accessed JBLM's Website



16% have attended a JBLM Meeting



81.5% have visited JBLM



Lakewood Residents feel largely positive about having JBLM nearby

80%

Very or Mostly Positive

12%

Neutral

5%

Very or Mostly Negative

Joint Base Lewis McChord

• **62%** of Lakewood Respondents felt JBLM does ENOUGH to minimize any negative impact on surrounding communities.



- **26%** Felt the Base should be doing MORE

Community Support



• **64%** of Lakewood Respondents felt the community should do MORE to support veteran hiring programs