



SOUTH SOUND MILITARY & COMMUNITIES PARTNERSHIP AND THE CITY OF LAKEWOOD

MILITARY INSTALLATION RESILIENCY
REVIEW FOR JOINT BASE LEWIS-
MCCHORD

Workshop #1

June 8, 2023

Teams Link Here:
[Click here to join the
meeting](#)



Welcome

SSMCP Overview



Executive Leadership Team

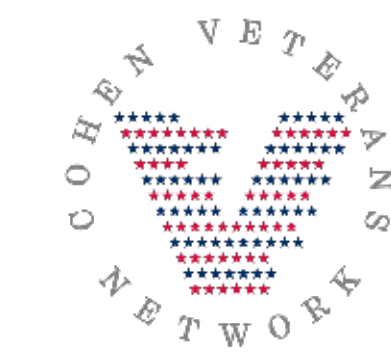
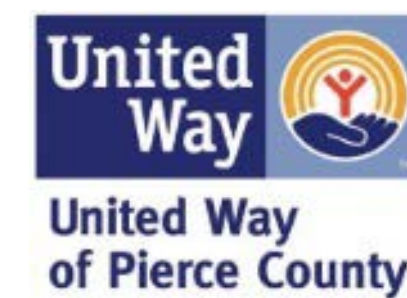


Steering Committee



A Partnership of more than 50 member cities, counties, the Nisqually Indian Tribe, Joint Base Lewis McChord, State, regional, corporate, and non-profit organizations dedicated to fostering outcomes that are mutually beneficial to the South Sound region.

Working Group Chairs



The Steven A. Cohen
Military Family Clinic
at Valley Cities



SSMCP focuses on the intersection of issues between local governments and the military community



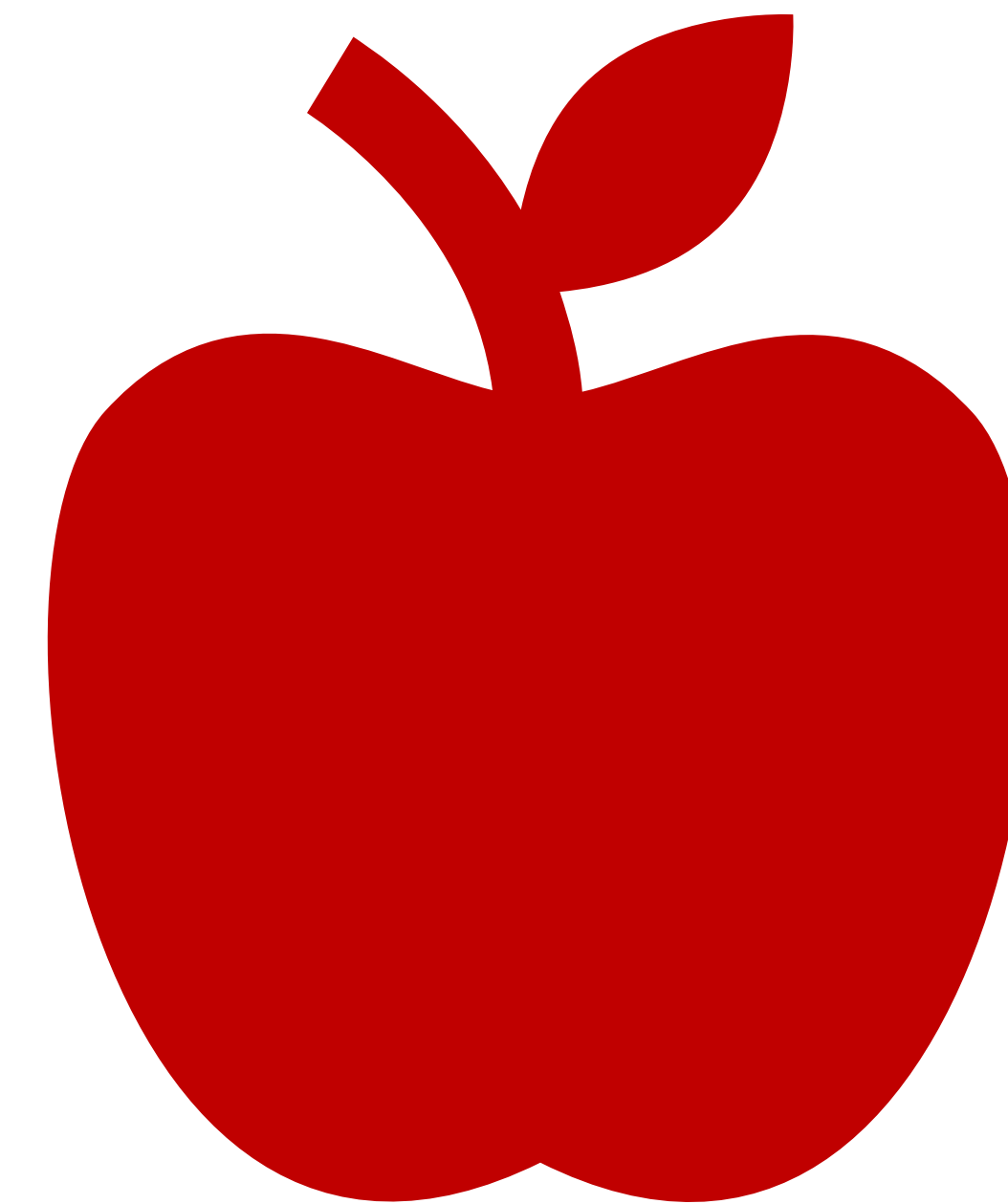
Safety Briefing and Housekeeping

Emergency Exits

Cell Phones

Materials

Breaks and Lunch





Workshop Objectives

- Get settled and meet new partners. (15 min)
- Gain an understanding of the project and its expected outcomes. (15 min)
- Review the approach to defining the project study area and critical assets. (15 min)
- Review the initial list of proposed priority hazards and threats for the project. (15 min)
- Work collaboratively, in breakout sessions, to identify areas of concern and critical assets specific to each community lifeline. (90 min)
- Share key takeaways from breakout discussions. (30 min)
- Identify next steps for MIRR development. (15 min)



Introductions

Find someone you don't know and introduce yourself...

**Hi! My
name
is...**

**Something
that excites
me about my
job is...**

Take a minute or two and then switch...



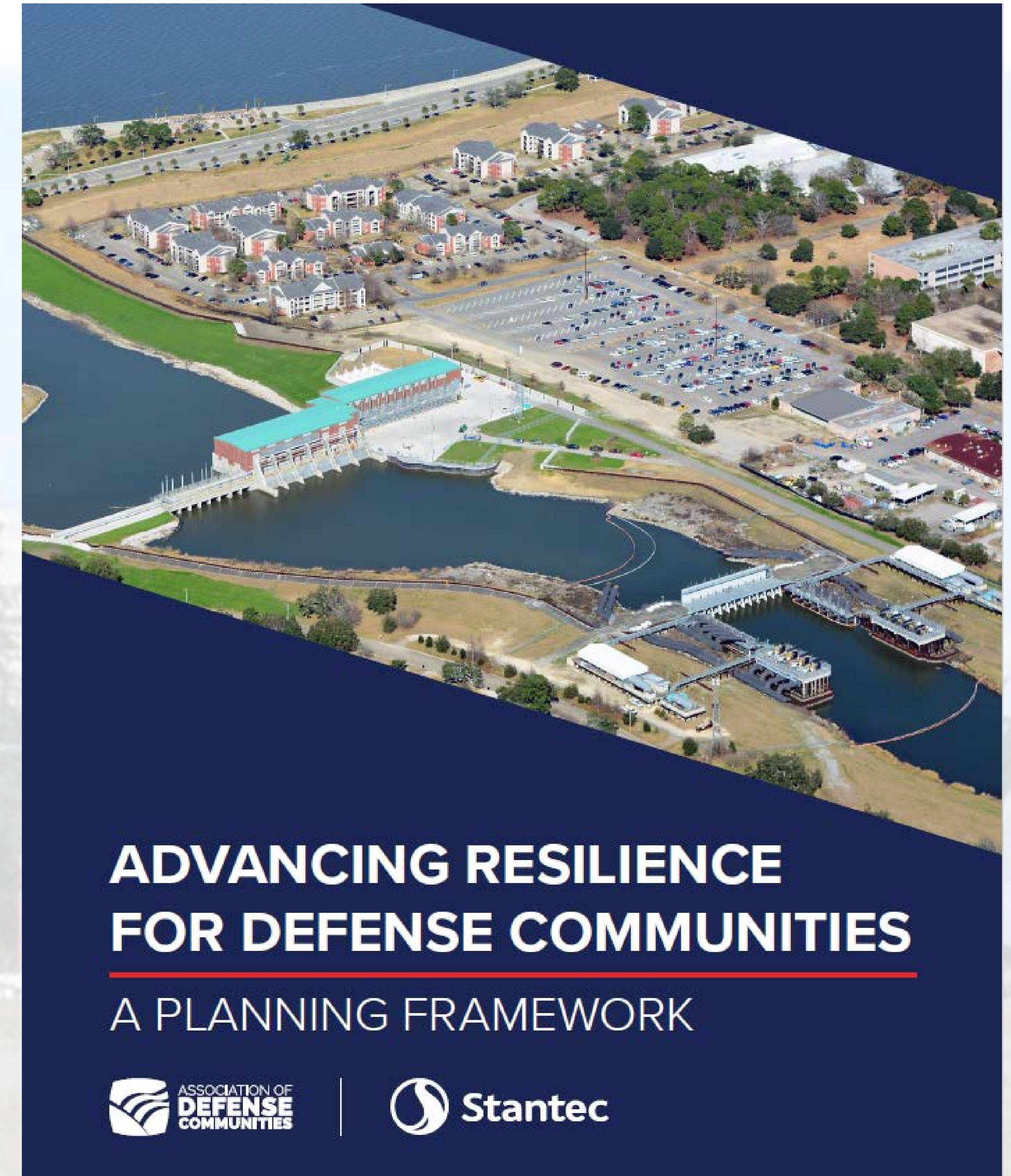
Project Overview



What is a Military Installation Resiliency Review?

The core purpose of the MIRR is to identify the risks, hazards, and vulnerabilities of concern as it relates to the ability of the military to carry out its missions on the installation that could be mitigated through investments and solutions outside the fence line in the community.

- Resilience is about making our communities and installations stronger, now and in the future, for everyone.
- Enable the community, together with JBLM, to assess shared vulnerabilities and risks with special attention given to unique resilience requirements for JBLM
- Provide methods to assess vulnerabilities and risks not only independently but also in coordination with threats to installation resilience.

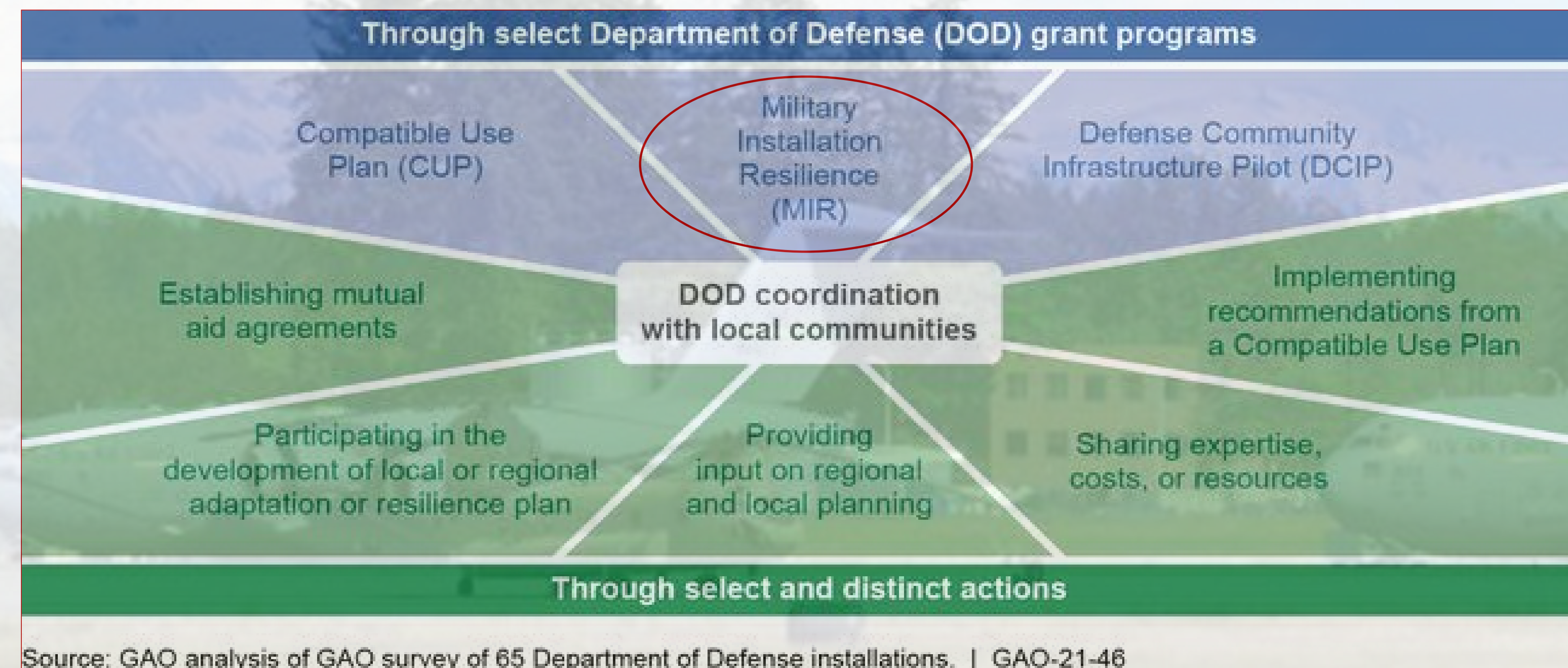




Military Installation Resilience Defined

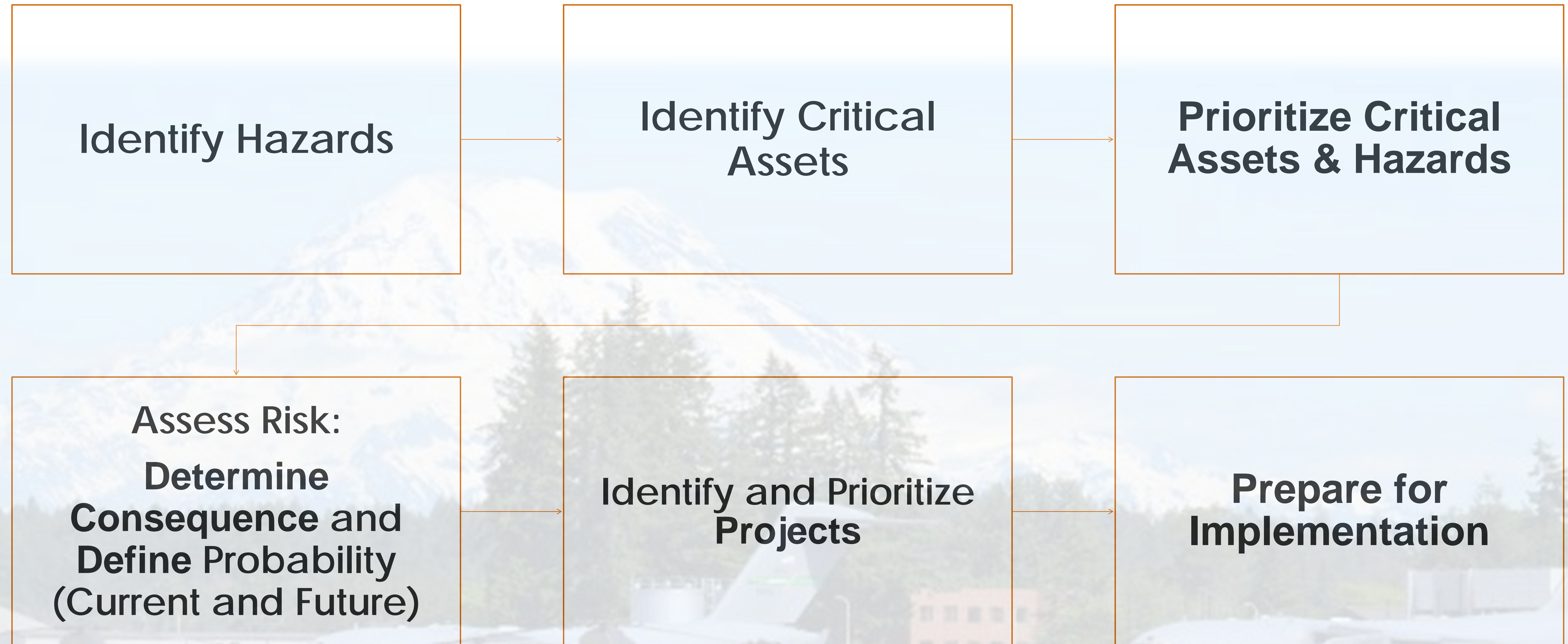
*“The capability of a military installation to avoid, prepare for, minimize the effect of, adapt to, and recover from extreme weather events, or from anticipated or unanticipated changes in environmental conditions that do, or have the potential to, **adversely affect the military installation** or essential transportation, logistical, or other necessary resources **outside of the military installation** that are necessary in order to **maintain**, improve, or rapidly reestablish installation mission assurance and mission-essential functions.”*

Source: FY 2019 National Defense Authorization Act





MIRR Process





Project Organization and Governance

Project Sponsor

- SSCMP administers project and provides oversight of consultant resources and support to SSMCP Resiliency Task Force
- City of Lakewood serves as DoD Grantee

SSMCP Steering Committee + JBLM Ex Officio Representation

- Serves as steering committee to **guide planning process, coordinate efforts, accept final project deliverables**
- JBLM officials participate in an ex officio role

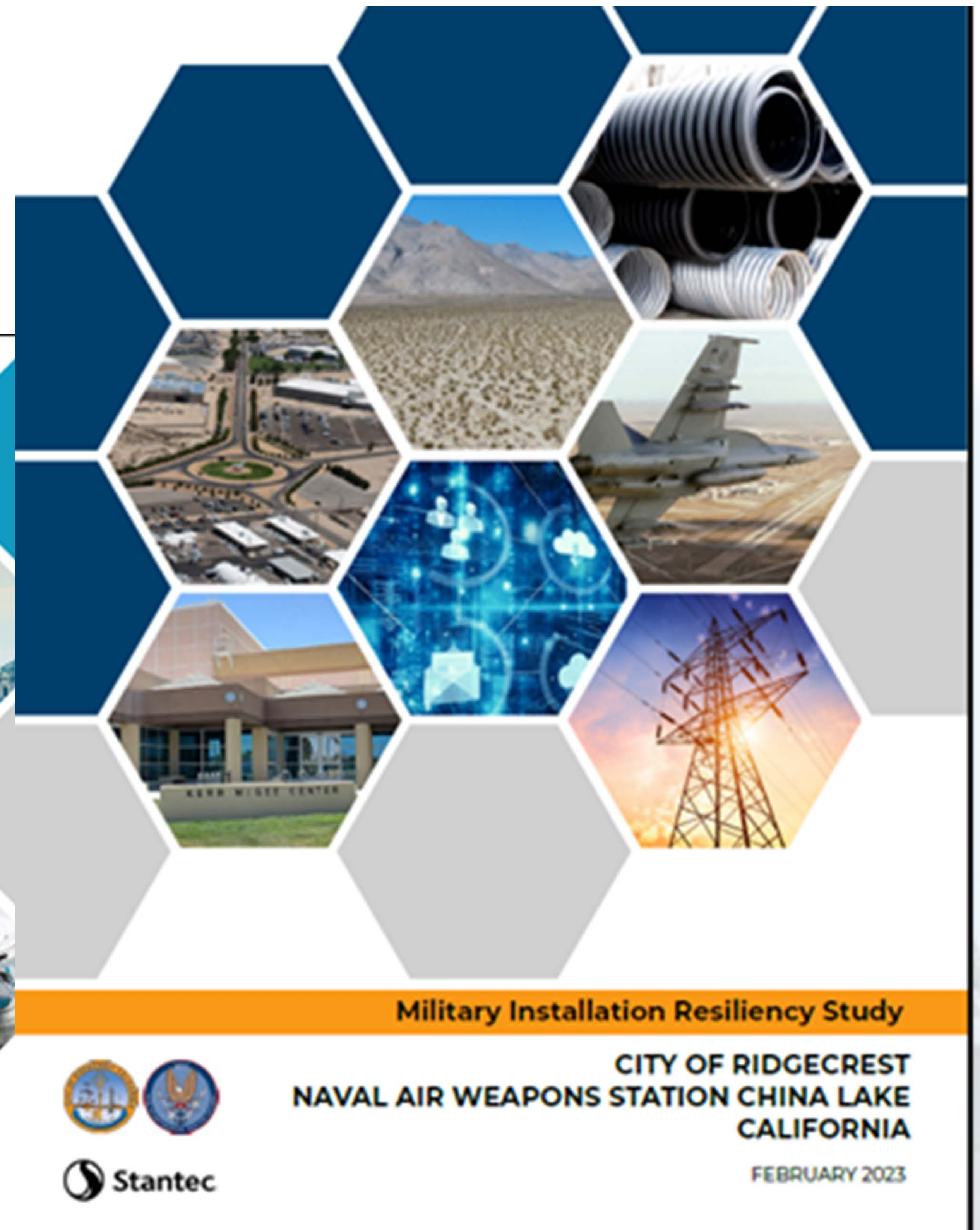
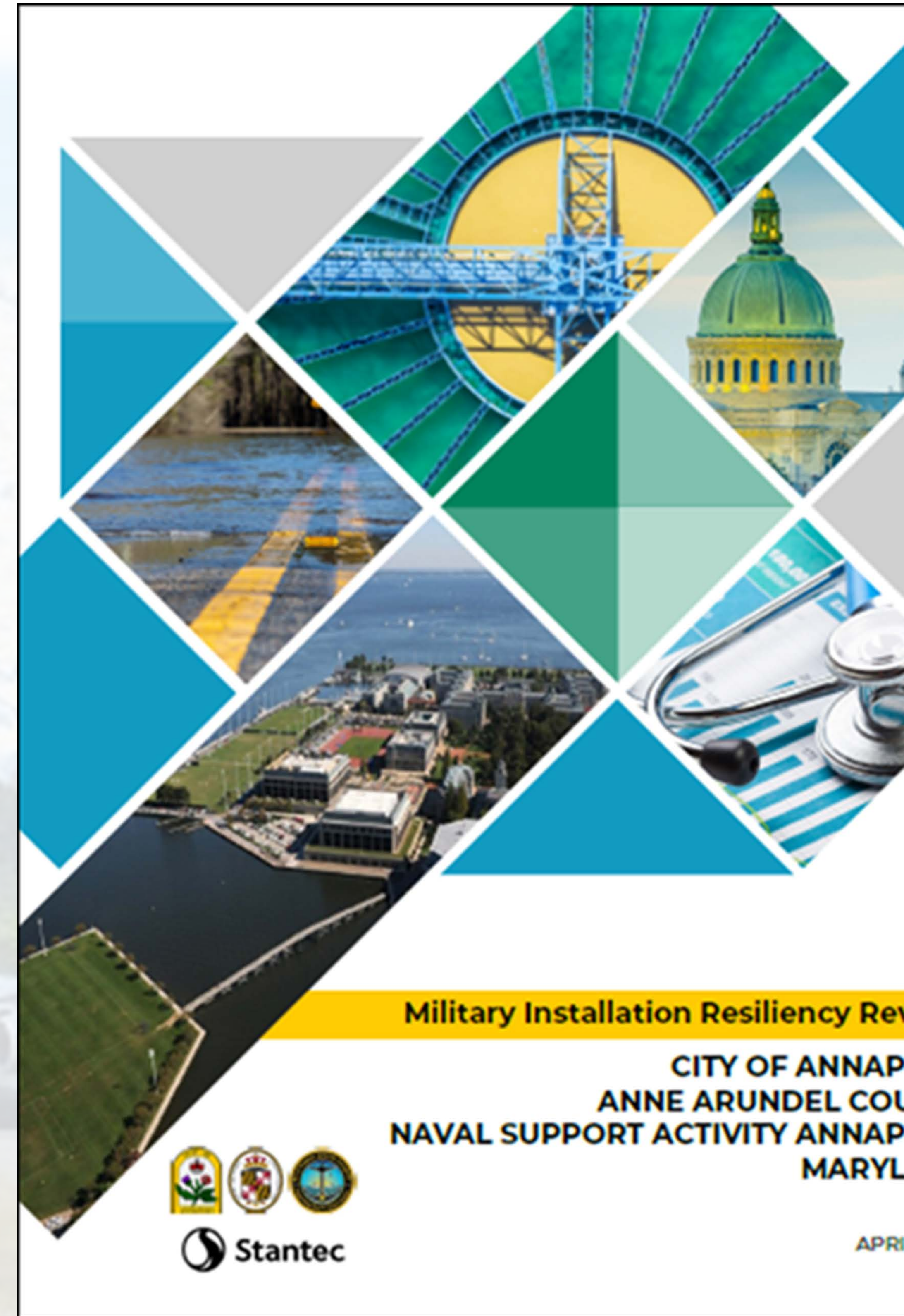
SSMCP Resiliency Task Force

- Contributes to resilience planning process through knowledge, expertise, sharing and collaboration
- Represents **technical and subject matter experts**
- Develop and recommend strategies and actions to present to Steering Committee





Past MIRRs





Project Study Area and Critical Assets



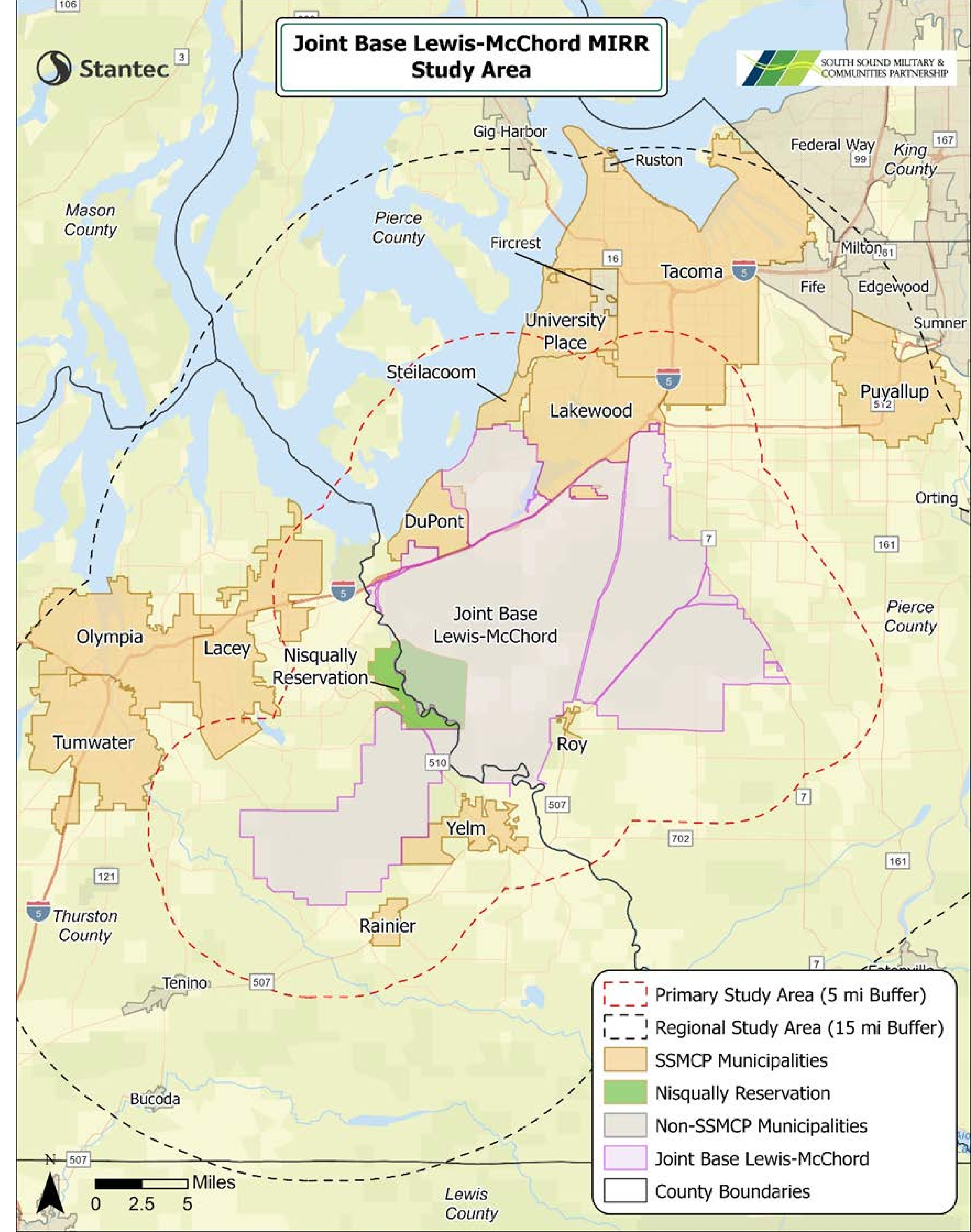
Project Study Area

Primary Study Area – Within five miles of JBLM's perimeter

Regional Study Area – Within 15 miles of JBLM's perimeter and includes all SSMCP communities

Assumptions

- Shared assets falling outside the regional study area can also be included in vulnerability assessment
- Includes Camp Murray
- Excludes Yakima Training Center

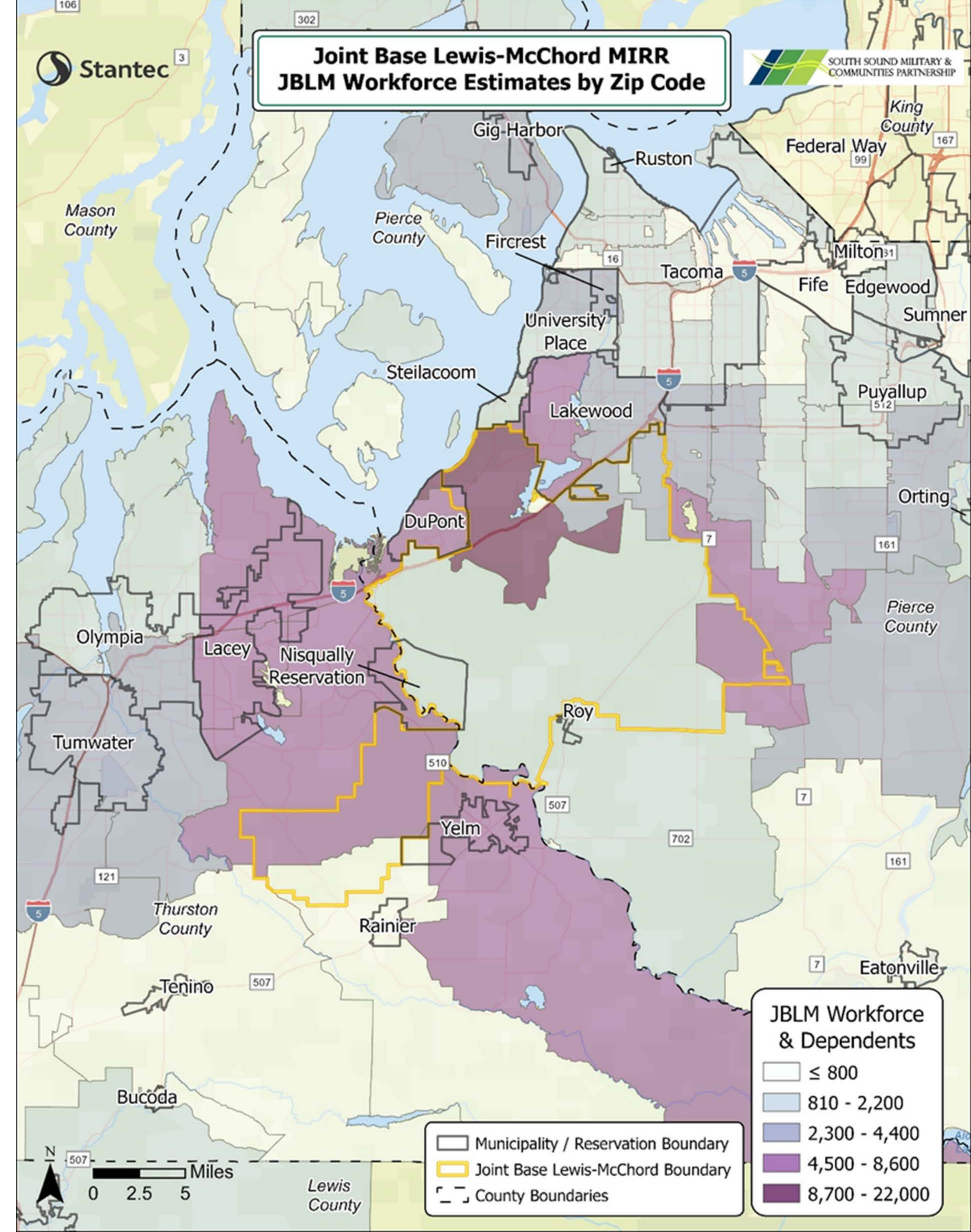




JBLM Workforce Distribution

Assets in zip codes with high concentrations of JBLM staff may be added or prioritized regardless of proximity to the base

Data provided by the Defense Enrollment Eligibility Reporting System





Community Lifelines

FEMA's Lifelines will be used to guide how we identify and prioritize assets that are crucial to the operation of the installation as well as the surrounding communities



Water:

Groundwater, Water/Wastewater Treatment Plants, Distribution Systems



Safety and Security:

Fire and Police Stations



Health and Medical:

Hospitals, Ambulatory Services, Triage Locations



Hazardous Materials:

Railroads, Superfund Sites, Landfills



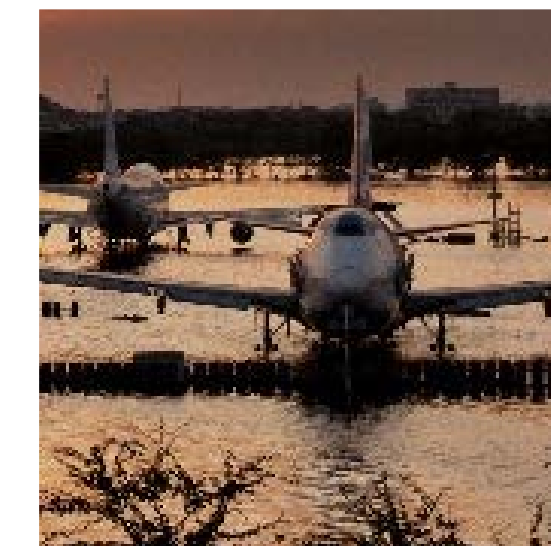
Energy:

Hydroelectric Facilities, Substations



Communications:

Dispatch Centers, Cellular Towers



Transportation:

Evacuation Routes, Installation Access



Food and Shelter:

Community Housing, Warming/Cooling Shelters, Food Pantries



Defining Critical Assets

Critical Assets are those whereby loss of functionality could lead to:

- Loss of life
- Serious injury
- Threatened safety
- Public health impacts
- Quality of life reduction (e.g., long term economic impacts)
- **Priority focus on adverse impacts on installation, mission assurance, readiness**

	Lifeline	Local	Linear	Node
Communications			√	
Energy			√	
Food and Shelter		√		
Health and Medical				√
Safety and Security		√		
Transportation			√	
Water			√	
Hazardous Materials				√

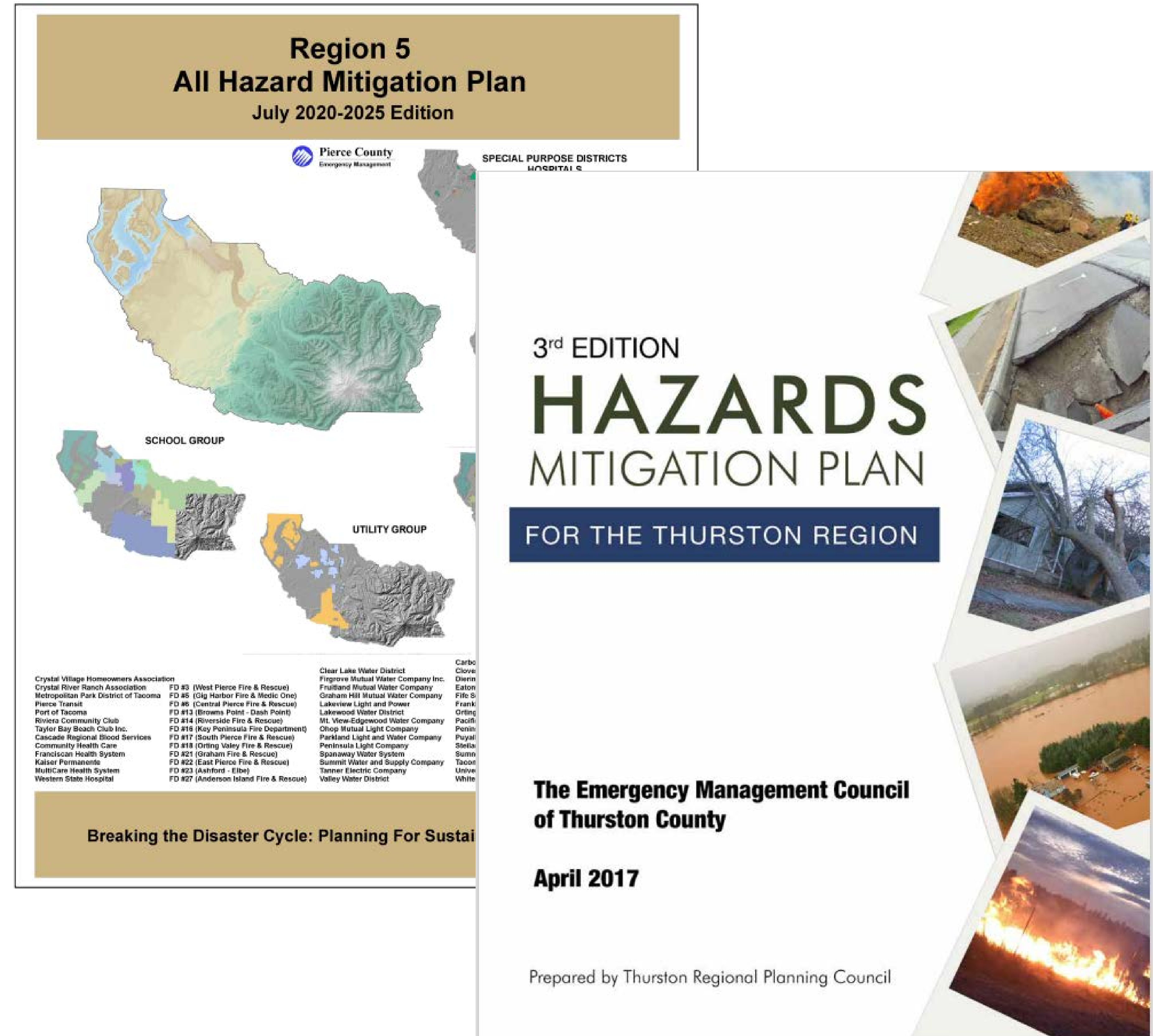


Hazard and Threat Identification



Hazard Identification and Methodology

- Review of:
 - Hazard mitigation plans
 - Climate action plans
 - Hazard studies and assessments
 - JBLM All Threats and Hazards Assessment
- Discussion with local hazard mitigation planners and the Washington state climatologist
- Hazards selected based on prevalence and assignment of risk within plans
- Further refined with project team input and review of GIS data





All Hazards Considered

Natural

- Coastal Flooding and Sea Level Rise
- Inland Flooding (Riverine and Pluvial/Drainage)
- Atmospheric Rivers and Extreme Precipitation
- Drought
- Tsunamis
- Volcanic Activity
- Infectious Disease Outbreak
- Extreme Cold and Freeze
- Extreme Heat and Heat Waves
- Severe Winter Weather
- Wildfire
- Earthquake and Seismic Activity
- Landslide, Debris Flows, and Erosion

Non-Natural

- Traffic and Transportation Incidents
- Terrorism and Malevolent Acts
- External Acts of Aggression
- Aquifer Contamination
- Dam and Levee Failure
- Power Grid Failure
- Supply Chain Failure
- Hazardous Materials or Chemical Releases
- Labor Strikes
- Cybersecurity Threats



Draft Hazard List – Hazards to be Included in Study

Hydrologic

- Coastal Flooding and Sea Level Rise
- Inland Flooding (Riverine and Pluvial/Drainage)
- Atmospheric Rivers and Extreme Precipitation

Atmospheric

- Extreme Heat and Heat Waves
- Severe Winter Weather

Geologic

- Tsunamis
- Volcanic Activity
- Earthquake and Seismic Activity
- Landslide, Debris Flows, and Erosion

Other

- Wildfire
- Infectious Disease Outbreak
- Traffic and Transportation Incidents



Hazard Roundtable Discussion

Questions:

- Do you disagree with the inclusion/exclusion of certain hazards?
- Are there any hazards that should be included that are not mentioned?

Sumner Grade Fire
image from Steve Ringman,
The Seattle Times



Community Lifeline Breakout Sessions



Breakout Session Assignments

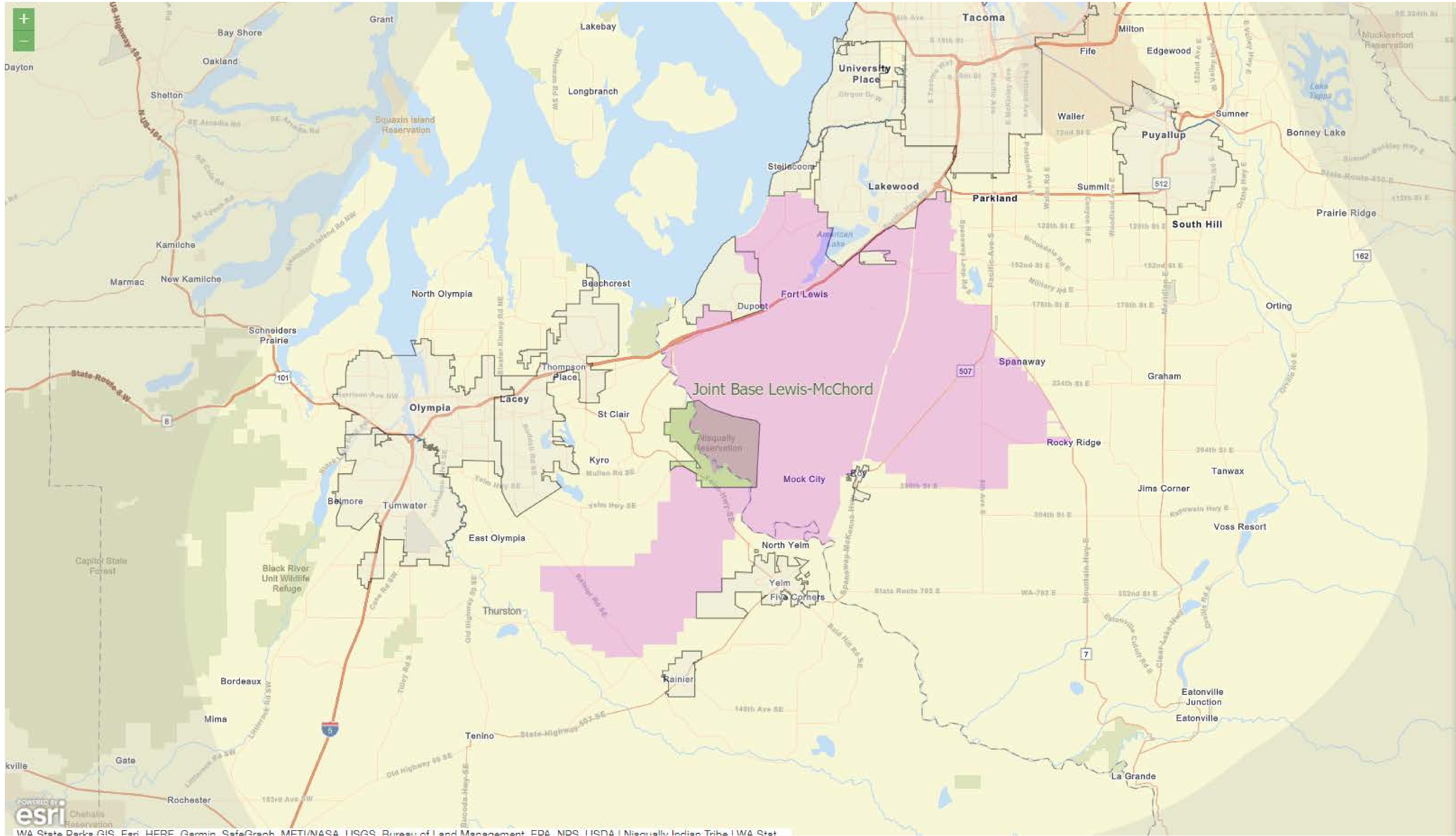
Breakout Group	Assignees		Room	Facilitator
Breakout Group #1 Communications Transportation Hazardous Materials Safety & Security	Brandon Cheney Christi Bentz Darvan Cosby JoAnn Schueler Julie Winkler Kyle Bustad	Medhi Sadri Nathan Johnson Serena Rotondo Tieka Adeogun William Palmer	Downstairs Conference Room	Ryan Givens
Breakout Group #2 Health & Medical Food & Shelter	Gabbie Hubbard Greg Hart Jeff Wilson KC Caesar	Nicole Ayers Ron Banner	Third Floor Conference Room	Christina Hurley
Breakout Group #3 Energy Water	Carol Stuckey Courtney Rose David Troutt Derek Pell	Helmut Schmidt Jason Lelli Larry Clark Randall Black	Council Chambers	Cyrena Eitler
Virtual Group Various Lifelines	TBD		Microsoft Teams	Rebecca Leitschuh



Breakout Groups – Activity

Topic	Discussion Topics
Topic 1: Hazard Prioritization	<p>Which hazards are you most concerned about with regard to your assets, systems, or operations? Why?</p> <p>Have you had previous impacts from these hazards? What and where were the impacts?</p>
Topic 2: Existing Critical Assets	<p>What assets would you identify as being critical for this lifeline?</p> <p>How is this asset critical to the wellbeing of your community?</p> <p>How is this asset critical to the installation and continued military operations?</p>
Topic 3: Issues and Opportunities	<p>Any other information pertaining to critical assets or hazards that would be helpful to know? (e.g., planned capital improvement projects, reoccurring damages, potential solutions)</p>





Add Input

Select a template to create features

Identified Asset Area

Identified Asset (Area)

Identified Asset Point

Identified Asset (Point)

Identified Hazard Point

Identified Hazard (Point)

Identified Hazard Area

Identified Hazard (Area)

[JBLM MIRR \(arcgis.com\)](https://arcgis.com)



Report Outs



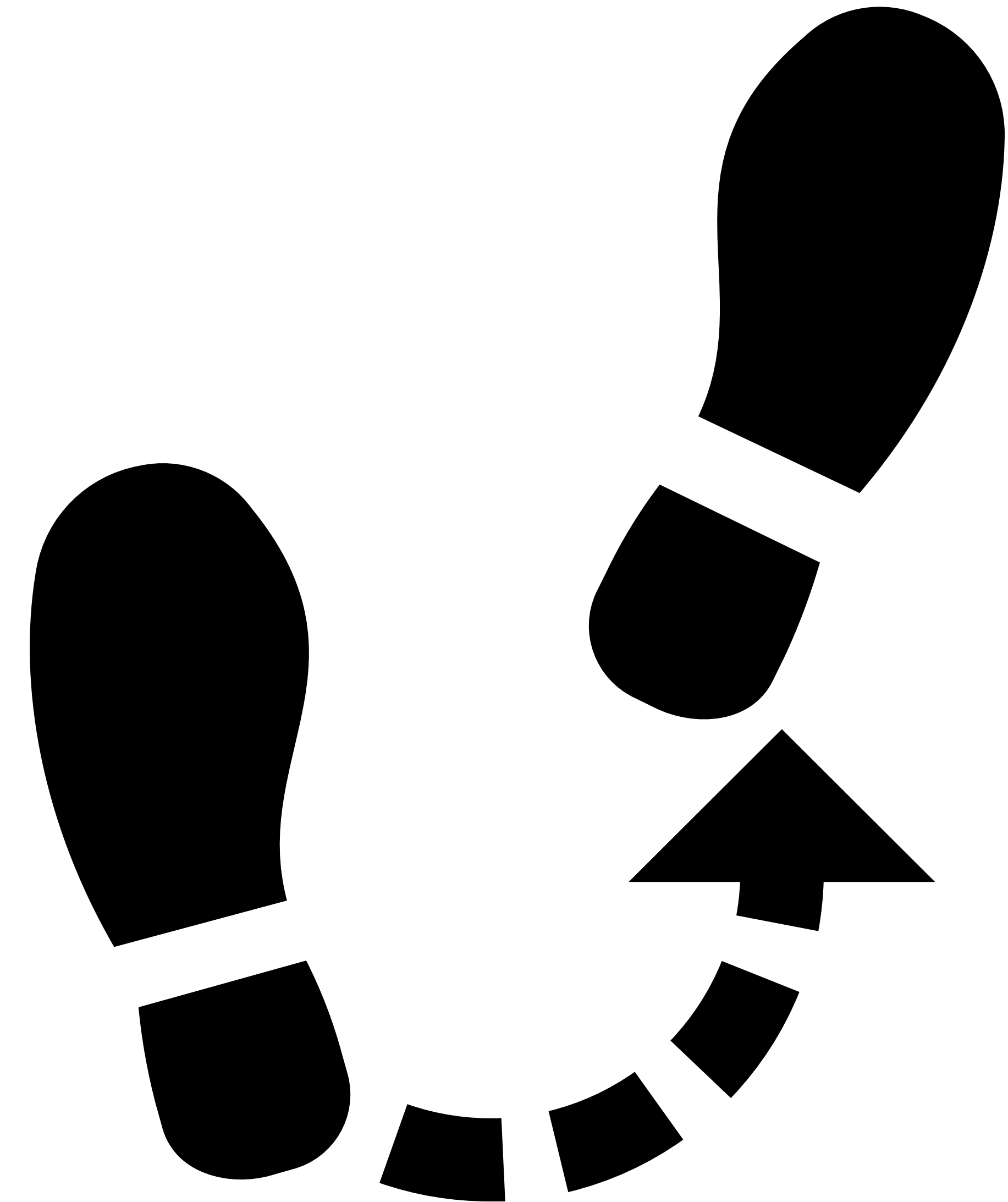
Next Steps

Resiliency Task Force Members:

- Complete Hazard Prioritization Survey
- Enter critical assets into Interactive Map Tool

Project Team:

- Develop Final Prioritized Hazards List
- Develop Draft Critical Assets List
 - To be vetted with SSMCP and JBLM staff
- Prioritize Critical Assets





**SOUTH SOUND MILITARY &
COMMUNITIES PARTNERSHIP AND
THE CITY OF LAKEWOOD**

MILITARY INSTALLATION RESILIENCY
REVIEW FOR JOINT BASE LEWIS-
MCCHORD

**THANK YOU FOR
YOUR PARTICIPATION!**

