

---

# Welcome to the May 22, 2025 SSMCP Elected Officials Council

**Mission. Community. Resilience.**

Sponsored by:



# Elected Officials Council

**22 May 2025**

**8:00 am – 10:00 am**

**Eagles Pride Golf Course**

8:00 – Breakfast – Networking

8:25 – Admin Remarks / Sponsor Recognition

8:30 – Land acknowledgement- Nisqually Tribe Chairman, Ken Choke

8:35 – SSMCP Welcome by Lakewood Mayor, Jason Whalen

8:45 – 2025 Legislative Session Review, Shelly Helder

8:55 – Remarks from I Corps Commander, Lieutenant General Matthew McFarlane

9:05 – Remarks from 62nd Airlift Wing Deputy Commander, Colonel John Berger

9:15 – Video Remarks - Congresswoman Strickland, 10th US Congressional District

9:20 – Video Remarks from Pierce County Executive, Ryan Mello

9:30 – 2025 SSMCP Initiatives & Updates, Maria Tobin

10:00 – Adjourn, networking



# Land Acknowledgement

**Nisqually Tribe Chairman  
Ken Choke**



# Welcome

## Mayor Jason Whalen City of Lakewood



# Washington State 2025 Legislative Session Update

**Shelly Helder**

**Gordon Thomas Honeywell Government Affairs**



# SSMCP State Legislative Update

May 2025

**Shelly Helder, State  
Lobbyist**



---

# 2025 State Legislative Priorities



## Defense Industry's Economic Impact on Washington State

- 4% of gross state product, \$30.9 billion, is connected to the defense economy
- 



## Military Family Quality of Life

- Childcare: SB 5509 & SB 5595
- Spouse employment: protection of Teaching Compact
- Housing: HB 1403

---

# 2025 State Legislative Priorities



## Defense Community Compatibility Account

- \$11.15 million allocated to the program
  - \$1 million awarded to the North Clear Zone
- 



## I-5 Nisqually River Delta

- \$12.8M in 25-27, \$41.2M in the future





# **JBLM First Corps Update**

## **Lieutenant General Matthew McFarlane**



# **JBLM 62<sup>nd</sup> Air Wing Update**

## **Colonel John Berger, Deputy Commander**

UNCLASSIFIED



# 62<sup>d</sup> AIRLIFT WING



**Colonel John W. Berger**  
*Deputy Commander*



*America's Airlift Wing...Mobility Warfighters*

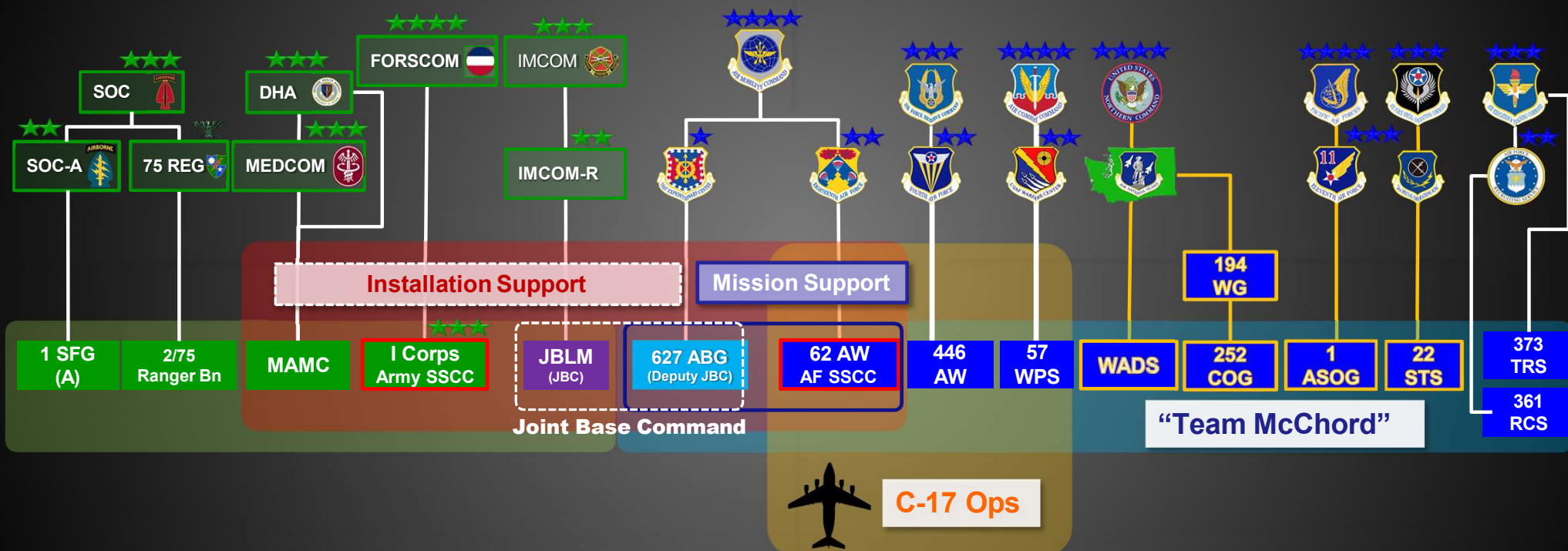


**McCHORD**

UNCLASSIFIED



# JOINT BASE LEWIS-McCHORD



America's Airlift Wing...Mobility Warfighters



**McCHORD**

UNCLASSIFIED



# 62<sup>d</sup> AIRLIFT WING “AMERICA’S AIRLIFT WING”



## OUR MISSION

The 62d Airlift Wing provides lethal Airmen and credible airlift capability to deter and defeat our pacing and acute challenges while supporting the Joint Force worldwide.

We are America's Airlift Wing... Mobility Warfighters.

## OUR VISION

Resilient, innovative, and adaptive Airmen ready to project the joint force against a near-peer adversary, support AMC-directed missions, and provide combat-ready forces to Combatant Commanders.

## OUR PRIORITIES

- 1) Provide prime nuclear airlift forces
- 2) Prepare the Wing to win
- 3) Develop ready Airmen and families
- 4) Execute today's Global Airlift Mission



McCHORD



UNCLASSIFIED



# ONLY AT McCHORD



## Prime Nuclear Airlift Force

**ONLY DoD Unit with  
Peacetime Nuclear Airlift  
Mission**



**Our #1 Priority Mission**

*America's Airlift Wing...Mobility Warfighters*

## Operation DEEP FREEZE

**Support the National  
Science Foundation  
research mission in  
Antarctica**



**Operate in/out of the world's  
only compacted snow runway  
near McMurdo Station**



**McCHORD**

UNCLASSIFIED



# C-17s IN THE HEADLINES



**US will send a missile defense system and troops to run it to Israel to aid defense against Iran**



**U.S. military conducts airfield seizure exercise, demonstrates strategic capabilities in Palau**

Published Oct. 21, 2024



**The US Air Force's plan to give its biggest planes new missions has gotten China's attention**

Christopher Woody Sep 22, 2023, 6:26 AM PDT

Share Save



NEWS | Jan. 28, 2025

**Department of Defense augments USCPB in removal flight efforts**



*America's Airlift Wing...Mobility Warfighters*

**SECDEF visits Japan during tour around the Pacific**

Published March 31, 2025



**Trump to visit Saudi Arabia in first overseas trip of second term, sources say**



**McCHORD**



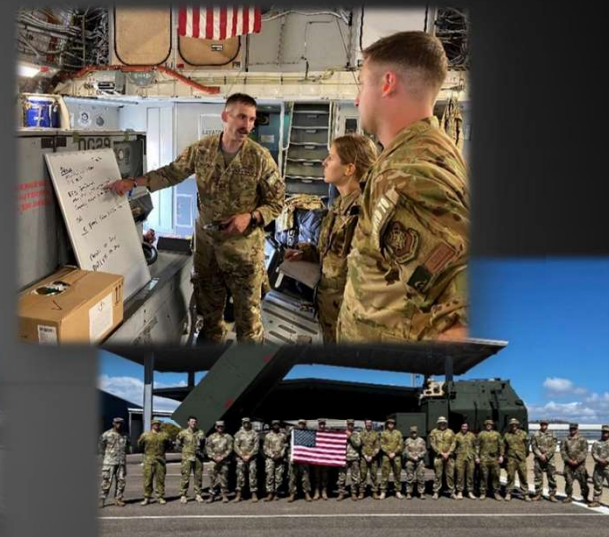


# LARGE SCALE EXERCISES



## SWIFT RESPONSE (May 2024)

- 9,500 personnel/17 countries/3,650 US troops
- Military partnerships in the EUCOM AOR
- Strategic messaging of Global Reach capabilities
- Building inter-operability



## Exercise Rainier War 25A (Oct 2024)

- 62 AW, 627 ABG, 92 ARW, 366 FW, 721 CRG
- 7 AS AFFORGEN Certification Event
- Integrated Combat Turns
- HIMARS Rapid Infiltration
- Semi-Prepared Runway Ops
- Specialized Fueling Ops



## OPERATION KENNEY'S RETURN (Aug 2024)

- Verified the 62 AW's ability to employ and perform in a high-intensity, contested, degraded, and operationally limited (CDO) environment.
- 419 Joint/Coalition Personnel
- 246K lbs Mx equip, MCA equip, and vehicles

*America's Airlift Wing...Mobility Warfighters*



**McCHORD**



UNCLASSIFIED



# COMMUNITY ENGAGEMENT



Local School Visits



ROTC AFSC Open House



Spouse Flight



JBLM Career Summit



POW/MIA Wreath Laying



Armed Forces Day



McCHORD





**THANK YOU!**

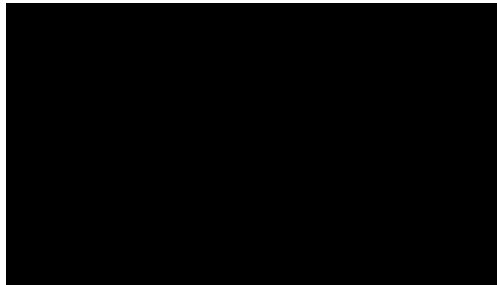
---

# 10<sup>th</sup> Congressional District Congresswoman Marilyn Strickland





# Pierce County Executive Ryan Mello





# SSMCP Update

## Maria Tobin, SSMCP Program Manager

Mission. Community. Resilience.



# 2024 SSMCP Study Outcomes

## Housing Study 2.0:

- Quantified the need for more on base housing at JBLM

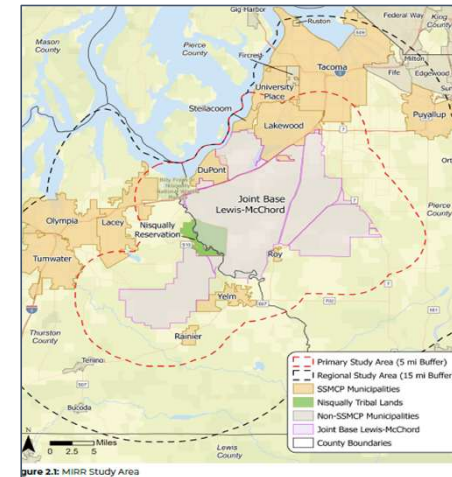


## Washington State Military Spouse Employment Study:

- 18 recommendations + 85 strategies to reduce barriers affecting local, state and federal policies

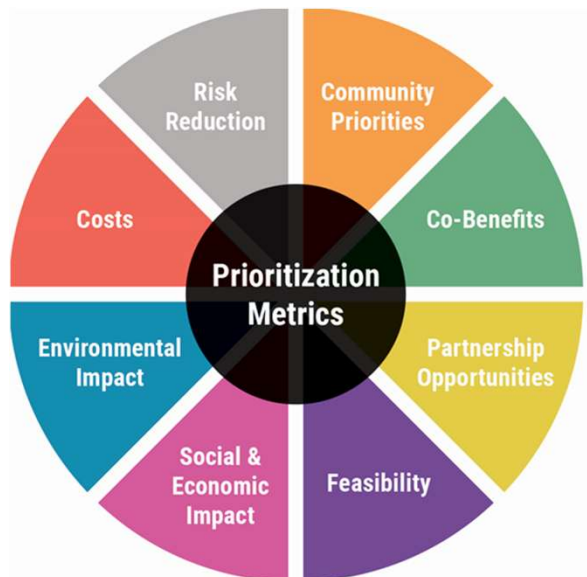
## Military Installation Resiliency Review (MIRR):

- Resilience Action Plan ranking top community-based projects in sustaining mission-critical operations and infrastructure.



# MIRR Action Plan

Provides JBLM, SSMCP, and their local defense community partners with a results-oriented strategy comprised of specific recommended resilience actions and projects focused on shared critical assets, programs or services.



## ACTION PLAN: PROJECTS



# SSMCP Projects for 2025

**JBLM MIRR Implementation**  
**OLDCC Grant Amount: \$487,701**



## Projects:

- JBLM Defense Community Transportation Corridor Study: 16-18 months
- JBLM Defense Communications Interoperability Plan: 6-8 months
- JBLM Energy Grid Readiness Study: 4-6 months



# Defense Community Transportation Corridor Study

**Supports JBLM's need to have installation access, deploy people and equipment, and conduct emergency evacuation in a timely manner while also minimizing congestion throughout the South Sound.**

## Associated Hazards

Inland Flooding, Seismic Events (shaking, tsunami, ground deformation), Sea Level Rise, Storm impacts

## Associated Critical Assets

- I-5
- SR-507
- SR-7
- SR-512
- Nisqually Road roadway corridors
- Burlington Northern Santa Fe Railroad rail corridor.

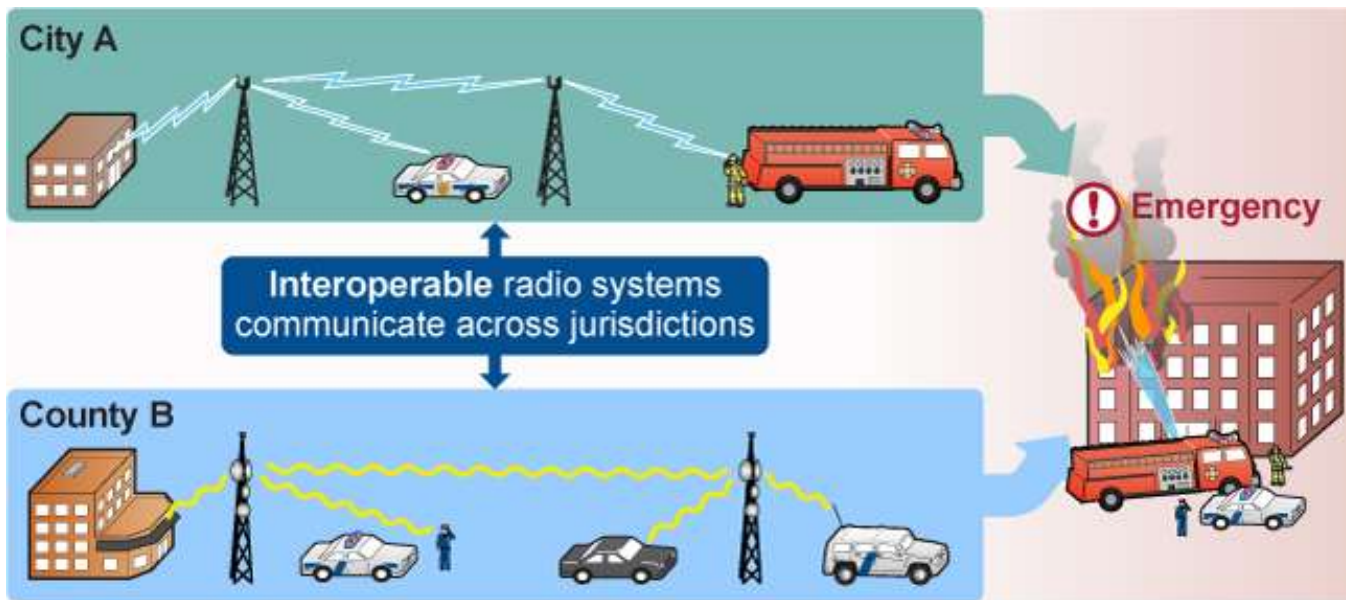


**Supports ongoing emergency transportation planning and system resilience**

# JBLM Defense Community Communications Interoperability Plan

6 – 8 months

Improve the ability to connect and exchange information with one another, in either implementation or access, without restriction.



## Associated Hazards

All hazards

## Associated Critical Assets

- Radio / cell towers,
- Dispatch and communications centers
- Back-up power systems at centers and towers,
- Trained operators

Source: GAO. | GAO-19-171

SOUTH SOUND MILITARY &  
COMMUNITIES PARTNERSHIP



# JBLM Energy Grid Readiness Plan

4-6 Months

**Ensuring power generation, transmission, and distributions systems are supported by redundancy and that technologies employed are augmented by effective management and coordination strategies between partners.**

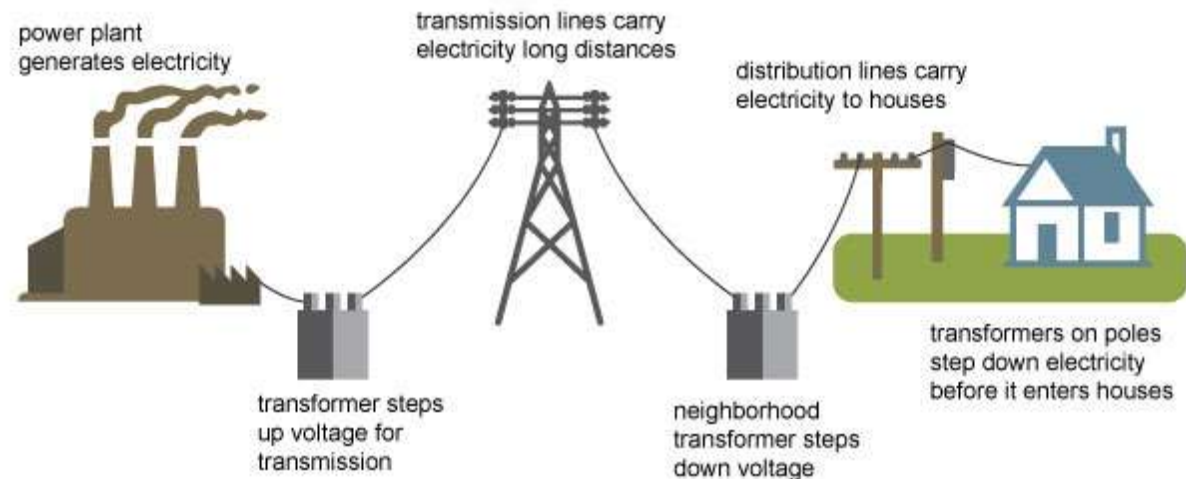
## Associated Hazards

- Severe Storm or
- High-heat event

## Associated Critical Assets

- Power generation
- transmission
- distribution assets

## Electricity generation, transmission, and distribution



Source: Adapted from National Energy Education Development Project (public domain)

---

# Defense Community Transportation Corridor Study

## Stakeholders

- SSMCP
- JBLM
- WSDOT
- Appropriate City and County Public Works/Roads Representatives
- Emergency Management Agencies (state, county, city)
- Waterway partners (NWSA, Port of Tacoma, Army Corps, et al.)
- Contractors for temporary repairs and recovery

# Mobile Resource Navigator - Digital Sponsor



## **Problem statement**

Nearly 40% of military spouses reported being unaware of resources available to them.

## **Project**

- Providing tailored navigation assisting military families in locating QoL resources on-and-off JBLM.
- Marketed to reach mil families where they are.
- Up-to-date information maintained through automation of information sharing and continuous feedback from mil spouses & partners

## **Benefits**

- Improves QoL for military families
- Improves workforce development of military families.

## **Partners**

Active Military Spouses  
Childcare Aware of WA  
United Way of PC

**MILGARD**  
SCHOOL OF BUSINESS

**W**  
MILGARD  
CBA

# Military Child Education Symposium

## May 1, 2025

### **SSMCP Education Working Group Chairs:**

- Clover Park School District - Superintendent Ron Banner
- Bates Technical College - Marcus Harvey

In partnership with:

- North Thurston School District
- Franklin Pierce School District
- Steilacoom Historical School District
- Bethel School District
- Timberland Regional Library
- Pierce County Library
- Joint Base Lewis McChord
- Steven A. Cohen Military Family Clinic



**Keynote Speaker:**  
Colonel Kent Park,  
JBLM Garrison Commander

Event sponsored by:





# Military Child Education Symposium

## May 1, 2025

### Panel Discussions

- **Hearing from Military-connected youth** about shared experiences, challenges, and opportunities.



**Discussed Military Cultural Competency & Supporting Behavioral Health-** Improving military cultural awareness and behavioral health resources for military children

**Innovative Ideas & Best Practices to Support Military Kids-** Exploring creative strategies and successful approaches to support military-connected students.



## SSMCP Remaining Work for 2025

- **Increase SSMCP outreach in Pierce and Thurston Counties**
- **Education stakeholders WA State Defense Economic Impact Study analysis**
- **Promote use of the WA Defense Community Compatibility Account**
- **Support military spouse employment and increased access to QoL Resources**
- **Pursue funding for I-5 corridor/Nisqually Delta improvements**
- **Inform / educate state legislators about SSMCP**
- **Meet with other military-civilian liaison entities in WA State**
- **Secure grant for JBLM Joint Land Use Study (JLUS) in 2026**





---

# Thank you!

[www.ssmcp.org](http://www.ssmcp.org)